

# GLEASON® - JDC, JDCII & JDU SERIES CONDUCTOR BAR SYSTEMS

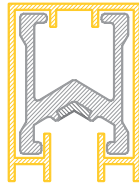
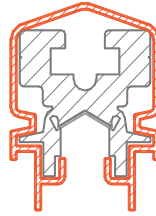
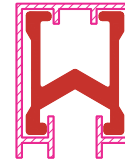
## FEATURES:

- SAFE, COMPACT AND EASILY ASSEMBLED
- SINGLE ENCLOSURE “H” CONDUCTOR
- ALUMINUM WITH STAINLESS STEEL INSERT OR COPPER
- INSTALL WITH OR WITHOUT INSULATORS
- VERTICAL OR HORIZONTAL INSTALLATION
- 600 V AC / 600 V DC WORKING VOLTAGE
- 100% DUTY RATED AMPACITIES
- SINGLE BOLT ANCHORING
- WATER AND DUST RESISTANT ENCLOSURES
- -25° TO 85°C (-13° TO 185°F)

## APPLICATIONS:

- STEEL MILLS
- SHIPBUILDING
- INDUSTRIAL PLANTS
- POWER PLANTS
- WAREHOUSES
- CONTAINER PORTS



**JDC**

**ALUMINUM**
**JDCH**

**ALUMINUM**
**JDU**

**COPPER**

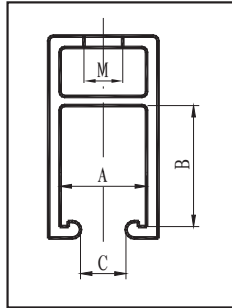
MODEL NUMBER	RATED CURRENT	RAIL LENGTH	MAXIMUM SPEED/MIN.	HANGER SPACING	BAR SPACING CL TO CL	EXPANSION JOINT	ENCLOSURE
		M (FT)	M (FT)	M (FT)	MM (IN)	M (FT)	MM (IN)
JDC150	150	6 (19.7)	300 (984)	1.2 (3.94)	80 (3.15)	100 (328)	18 x 25.2 (.7 x 1)
JDC200	200	6 (19.7)	300 (984)	1.2 (3.94)	80 (3.15)	100 (328)	24 x 31.5 (.78 x 1.24)
JDC250	250	6 (19.7)	300 (984)	1.2 (3.94)	80 (3.15)	100 (328)	24 x 31.5 (.78 x 1.24)
JDC320	320	6 (19.7)	300 (984)	1.8 (5.9)	80 (3.15)	100 (328)	32.5 x 42.5 (1.28 x 1.67)
JDC450	450	6 (19.7)	300 (984)	1.8 (5.9)	80 (3.15)	100 (328)	32.5 x 42.5 (1.28 x 1.67)
JDC600	600	6 (19.7)	300 (984)	1.8 (5.9)	80 (3.15)	100 (328)	32.5 x 42.5 (1.28 x 1.67)
JDC800	800	6 (19.7)	500 (1640)	2 (6.56)	80 (3.15)	100 (328)	32.5 x 42.5 (1.28 x 1.67)
JDC1000	1000	6 (19.7)	500 (1640)	2 (6.56)	80 (3.15)	100 (328)	32.5 x 42.5 (1.28 x 1.67)
JDC1250	1250	6 (19.7)	500 (1640)	2 (6.56)	80 (3.15)	100 (328)	32.5 x 42.5 (1.28 x 1.67)
JDC1500	1500	6 (19.7)	500 (1640)	3 (9.84)	80 (3.15)	100 (328)	44 x 57.5 (1.73 x 2.26)
JDC1800	1800	6 (19.7)	500 (1640)	3 (9.84)	80 (3.15)	100 (328)	44 x 57.5 (1.73 x 2.26)
JDC2400	2400	6 (19.7)	500 (1640)	3 (9.84)	80 (3.15)	100 (328)	44 x 57.5 (1.73 x 2.26)
JDCII150	150	6 (19.7)	400 (1312)	1.5 (5)	50 (1.97)	100 (328)	27 x 23 (1.06 x .90)
JDCII200	200	6 (19.7)	400 (1312)	1.5 (5)	50 (1.97)	100 (328)	27 x 23 (1.06 x .90)
JDCII250	250	6 (19.7)	400 (1312)	1.5 (5)	50 (1.97)	100 (328)	27 x 23 (1.06 x .90)
JDCII320	320	6 (19.7)	400 (1312)	1.5 (5)	50 (1.97)	100 (328)	27 x 23 (1.06 x .90)
JDCII450	450	6 (19.7)	400 (1312)	1.5 (5)	50 (1.97)	100 (328)	27 x 23 (1.06 x .90)
JDCII630	630	6 (19.7)	600 (1968)	2 (6.56)	50 (1.97)	120 (394)	39 x 52 (1.53 x 2.04)
JDCII800	800	6 (19.7)	600 (1968)	2 (6.56)	50 (1.97)	120 (394)	39 x 52 (1.53 x 2.04)
JDCII1000	1000	6 (19.7)	600 (1968)	2.5 (8.2)	50 (1.97)	120 (394)	39 x 52 (1.53 x 2.04)
JDCII1250	1250	6 (19.7)	600 (1968)	2.5 (8.2)	50 (1.97)	120 (394)	39 x 52 (1.53 x 2.04)
JDCII1450	1450	6 (19.7)	600 (1968)	3 (9.84)	50 (1.97)	120 (394)	39 x 52 (1.53 x 2.04)
JDU250	250	6 (19.7)	600 (1968)	1 (3.28)	80 (3.15)	200 (656)	18 x 24 (.7 x .94)
JDU320	320	6 (19.7)	600 (1968)	1 (3.28)	80 (3.15)	200 (656)	18 x 24 (.7 x .94)
JDU450	450	6 (19.7)	600 (1968)	1.2 (3.94)	80 (3.15)	200 (656)	18 x 24 (.7 x .94)
JDU600	600	6 (19.7)	600 (1968)	1.2 (3.94)	80 (3.15)	200 (656)	18 x 24 (.7 x .94)
JDU800	800	6 (19.7)	600 (1968)	1.5 (4.92)	80 (3.15)	200 (656)	32 x 42 (1.26 x 1.65)
JDU1000	1000	6 (19.7)	600 (1968)	1.5 (4.92)	80 (3.15)	200 (656)	32 x 42 (1.26 x 1.65)
JDU1250	1250	6 (19.7)	600 (1968)	1.5 (4.92)	80 (3.15)	200 (656)	32 x 42 (1.26 x 1.65)
JDU1500	1500	6 (19.7)	600 (1968)	2 (6.56)	80 (3.15)	200 (656)	44 x 58 (1.73 x 2.08)
JDU1800	1800	6 (19.7)	600 (1968)	2 (6.56)	80 (3.15)	200 (656)	44 x 58 (1.73 x 2.08)
JDU2400	2400	6 (19.7)	600 (1968)	2.5 (8.2)	80 (3.15)	200 (656)	44 x 58 (1.73 x 2.08)
JDU3200	3200	6 (19.7)	600 (1968)	2.5 (8.2)	80 (3.15)	200 (656)	44 x 58 (1.73 x 2.08)
JDU3600	3600	6 (19.7)	600 (1968)	2.5 (8.2)	80 (3.15)	200 (656)	44 x 58 (1.73 x 2.08)

Hanger / Anchor:

Insert the Conductor Bar ampacity into the blank space to determine the final Model #. Add: "A" at the end of the Model number for the Anchor Model #.

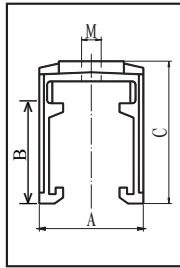
(Example: JDC-250-X for a 250 amp Hanger Bracket / JDC-250-XA for a 250 amp Anchor Bracket)

JDC-\_\_\_\_-X



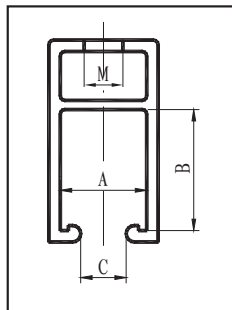
Size (mm)				Applicability
A	B	C	M	
19	26.5	10	8	150A ~ 200A
25	29	12	8	200A ~ 320A
33	40.4	14.2	10	320A ~ 1250A
45	56	18	10	1250A ~ 2400A

JDCII-\_\_\_\_-X



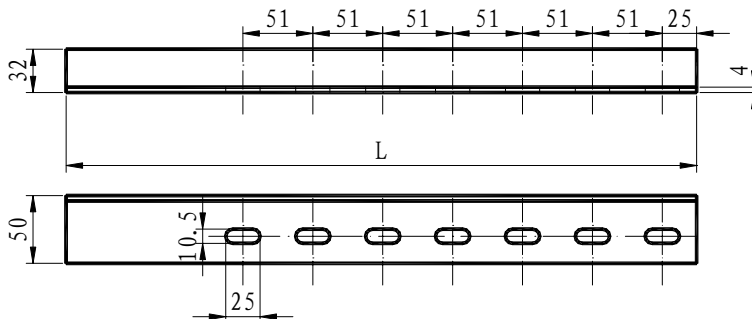
Size (mm)				Applicability
A	B	C	M	
48	41	65	8	630A ~ 1450A
260	50	80	12	630A ~ 1450A

JDU-\_\_\_\_-X

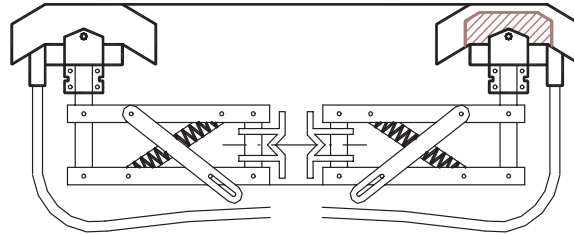


Size (mm)				Applicability
A	B	C	M	
19	26.5	10	8	150A ~ 200A
25	29	12	8	200A ~ 320A
33	40.4	14.2	10	320A ~ 1250A
45	56	18	10	1250A ~ 2400A

Mounting Brackets:

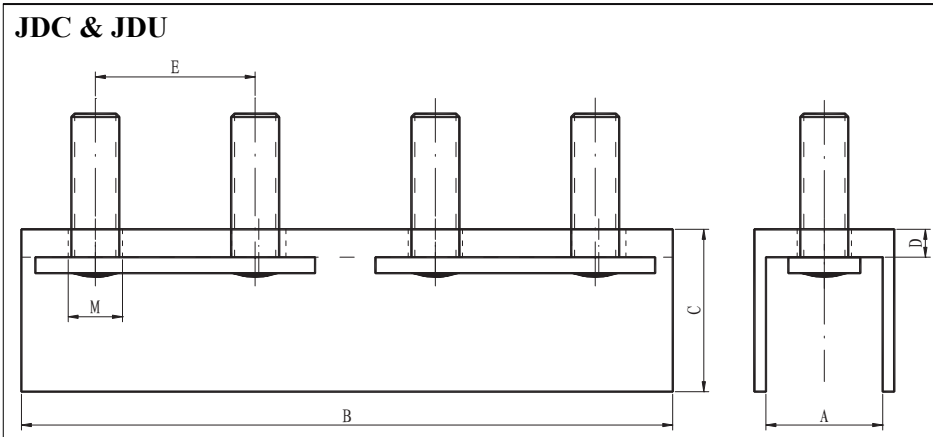


Model	L (mm)
JDS-460	460
JDS-535	535
JDS-610	610

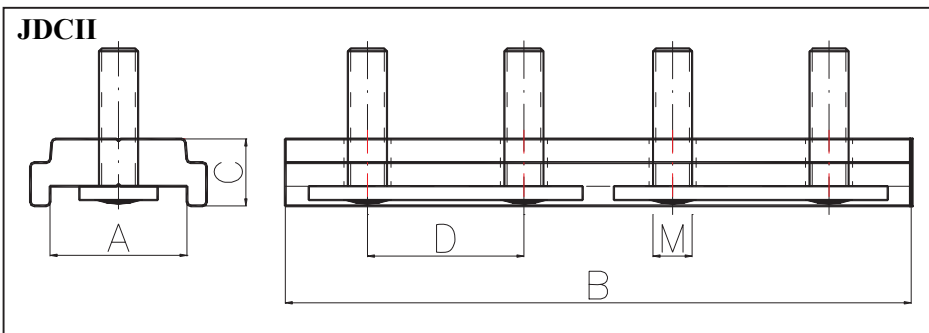

**COLLECTOR ASSEMBLY**

MODEL NUMBER	RATED CURRENT	SHUNT SIZE	APPLICABLE BAR SIZE		MAXIMUM SPEED M/MIN (FT. MIN.)	COLLECTOR HEAD MOVEMENT	CONNECTOR ARM TO BAR	WEIGHT SINGLE SHOE
			JDC					
JDC-150C	150	16 mm <sup>2</sup>	JDC	150, 200, 250	500 (1640)	± 80 / ±40	250 mm (10")	2.2 kg (4.85 lbs.)
JDC-150C2	150 x 2	16 mm <sup>2</sup>	JDC	150, 200, 250	500 (1640)	± 80 / ±40	250 mm (10")	2.2 kg (4.85 lbs.)
JDC-250C	250	25 mm <sup>2</sup>	JDC	250, 450	500 (1640)	± 100 / ±40	300 mm (12")	2.8 kg (6.17 lbs.)
JDC-250C2	250 x 2	25 mm <sup>2</sup>	JDC	450, 600	500 (1640)	± 100 / ±40	300 mm (12")	2.8 kg (6.17 lbs.)
JDC-800C	800	50 mm <sup>2</sup>	JDC	600, 1200	500 (1640)	± 100 / ±40	300 mm (12")	6 kg (13.22 lbs.)
JDC-1250C	1250	70 mm <sup>2</sup>	JDC	800, 2400	500 (1640)	± 100 / ±40	300 mm (12")	8 kg (17.63 lbs.)

Joint Clamp:



Size (mm)						Applicability
A	B	C	D	E	M	
18	100	25	5	25	M8	<200A
22	100	31	6	25	M8	200A ~ 250A
29	160	40	5	40	M10	320A ~ 450A
29	160	40	6.5	40	M10	600A ~ 800A
29	160	40	9	40	M10	1000A ~ 1250A
40	180	60	12	45	M14	1500A ~ 2400A
40	180	60	14	45	M14	>2400A



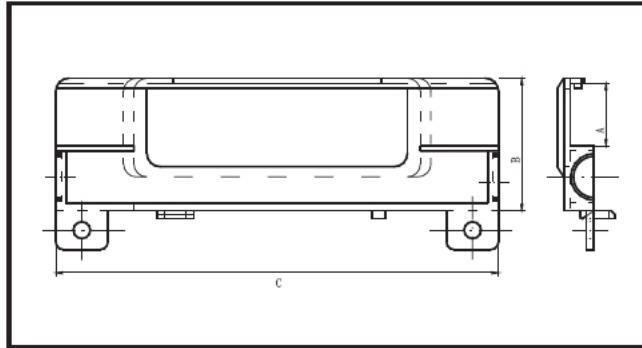
Size (mm)					Applicability
A	B	C	D	M	
35	160	17	40	M10	630A ~ 1450A

Joint Clamp Cover:

Insert the Conductor Bar ampacity into the blank space to determine the final Model #. Add: "L" at the end of the Model number for the Joint Clamp Cover Model #.

\*NOTE: For the JDCII, the model number will be JDCII-250-L and for the JDU, JDU-250-L.

\*JDC-\_\_\_\_-L

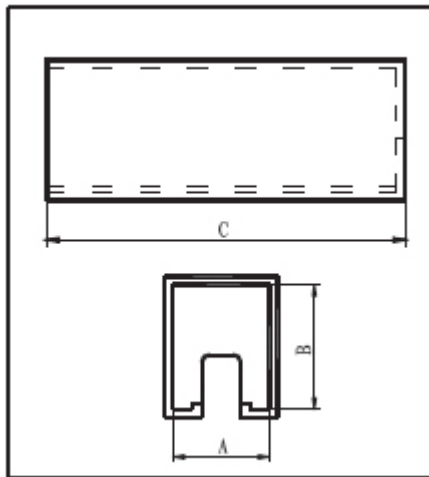


End Caps:

Insert the Conductor Bar ampacity into the blank space to determine the final Model #. Add: "D" at the end of the Model number for the End Cap Model #.

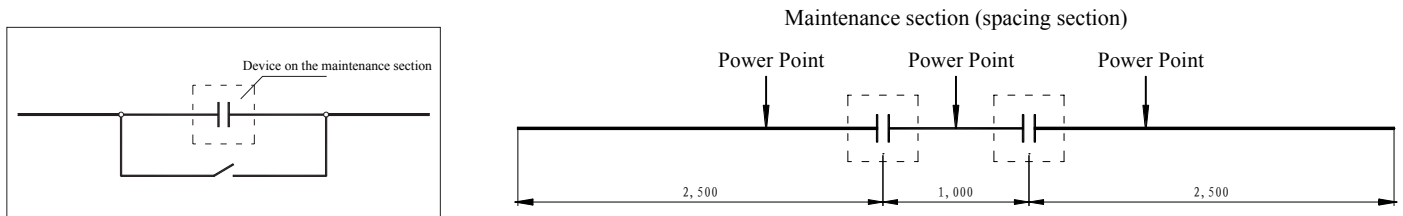
\*NOTE: For the JDCII, the model number will be JDCII-250-D and for the JDU, JDU-250-D.

\*JDC-\_\_\_\_-D

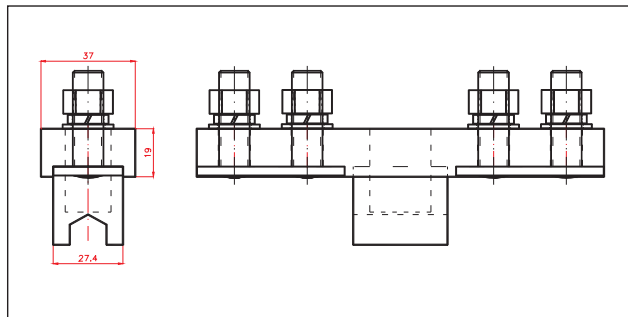


**Maintenance Section:**

The following is a suggested connection of the maintenance section. Terminal points must be separate when wiring the Maintenance Section. Do not connect any Power Feed directly to any bolt on the Maintenance Section. This will cause failure and risk of injury.



\*JDC-\_\_\_\_-MS

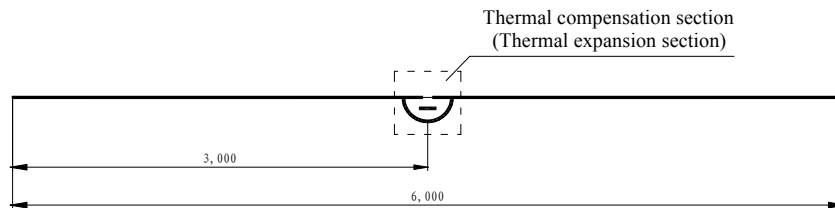


MAINTENANCE SECTION	
SPACING	AMPACITY RATING
20 - 30 mm	150 - 200
20 - 30 mm	200 - 320
30 - 50 mm	320 - 1250
30 - 100 mm	1250 - 2400

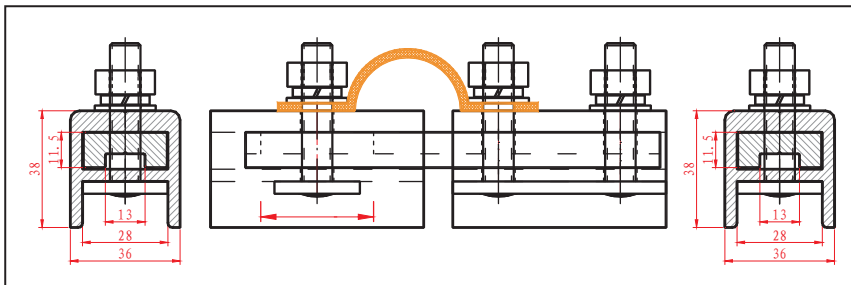
Insert the Conductor Bar ampacity into the blank space to determine the final Model #. Add "MS" at the end of the Model number for the Maintenance Section Model #.

\*NOTE: For the JDCII, the model number will be JDCII-250-MS and for the JDU, JDU-250-MS.

**Expansion Section:**



\*JDC-\_\_\_\_-ES

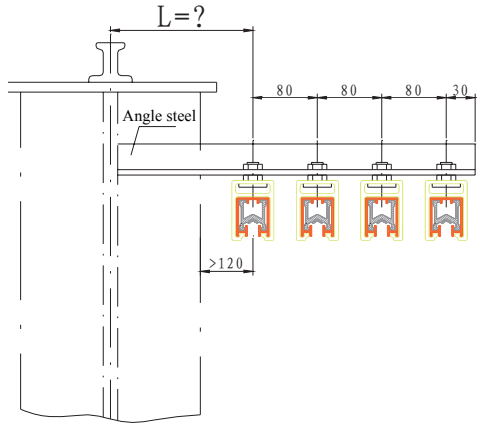


EXPANSION JOINT	
SPACING	AMPACITY RATING
30 - 50 mm	150 - 200
30 - 90 mm	200 - 320
30 - 90 mm	320 - 1250
30 - 90 mm	1250 - 2400

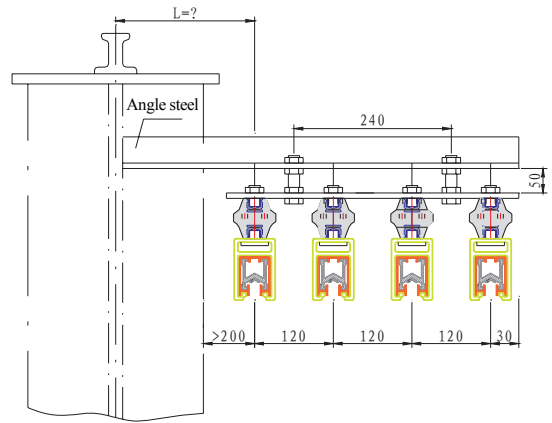
Insert the Conductor Bar ampacity into the blank space to determine the final Model #. Add "ES" at the end of the Model number for the Expansion Section Model #.

\*NOTE: For the JDCII, the model number will be JDCII-250-ES and for the JDU, JDU-250-ES.

Mounting Methods:

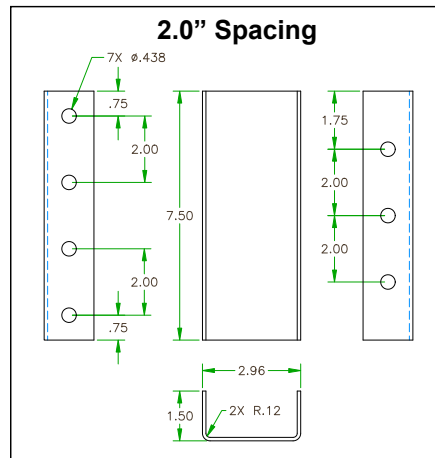


Method one: The insulated conductor rails are mounted on four lines horizontally



Method three: This mounting method is applicable for high voltage (3kV and below) and outdoor insulated aluminum bar enclosures.

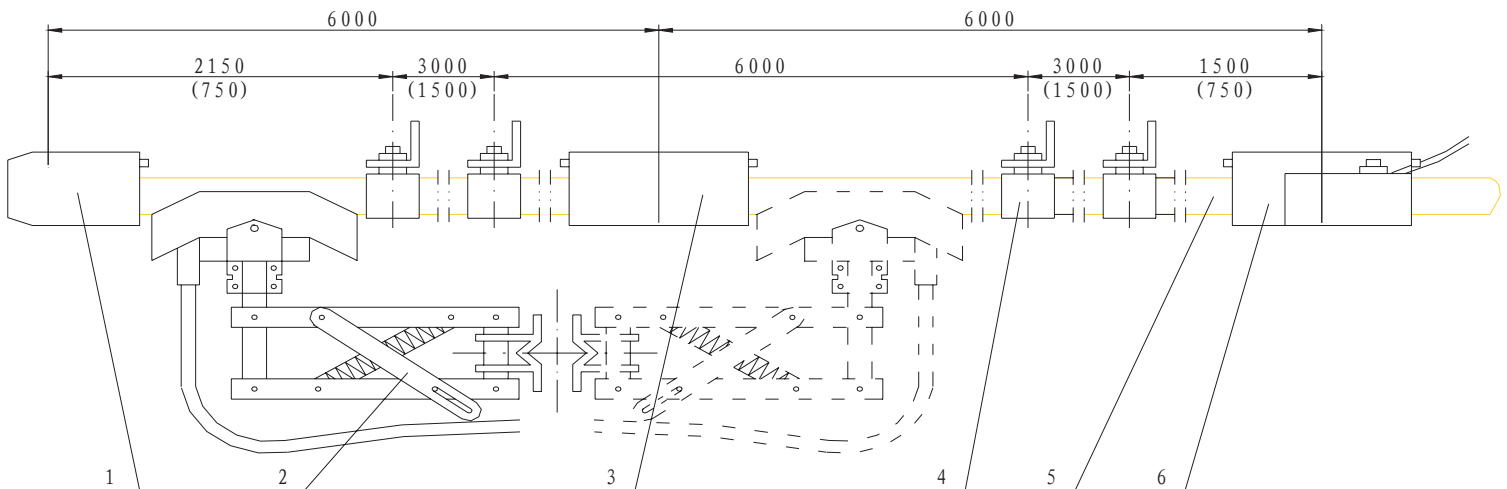
Mounting Bracket:



BK-L4

General Arrangement:

- 1. End Cap      2. Collector Assembly      3. Bar Connector and Cover      4. Hanger/Anchor
- 5. Conductor Bar      6. Cover w/ Power Supply to Bar Connector



**APPLICATION & PRODUCT PHOTOS**

