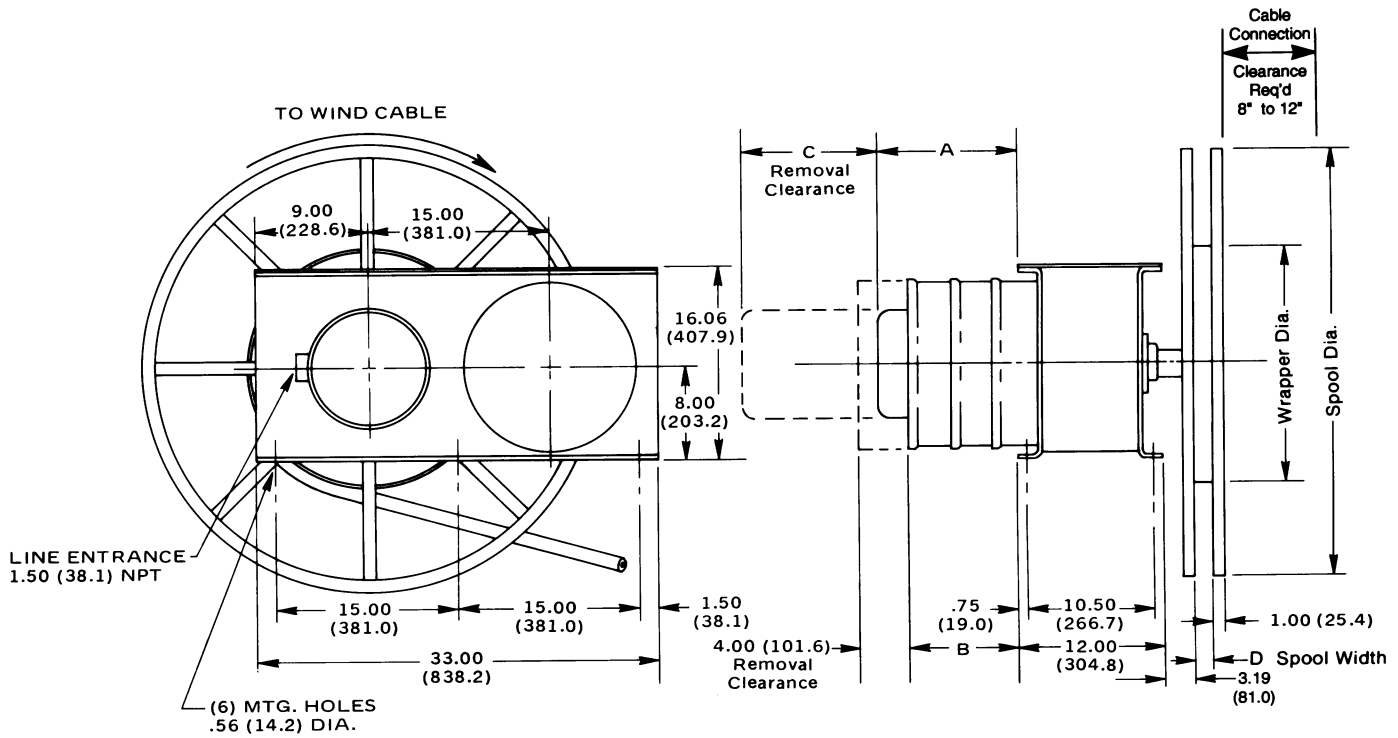


STEP 7

DIMENSION DRAWINGS – SHO SERIES - MONOSPIRAL WRAP



Slip Ring Housing Dimensions

		23	63	103	143	203	303
		33	83	123	163	243	363
		43	27	312	412		
			37				
			47				
			212				
			220				
			320				
			420				
"A" Dimension	inches (mm)	10.69 (272)	13.19 (335)	15.69 (399)	18.19 (462)	23.19 (589)	30.19 (767)
"C" Dimension	inches (mm)	8.50 (216)	11.00 (279)	13.50 (343)	16.00 (406)	21.00 (533)	29.00 (737)

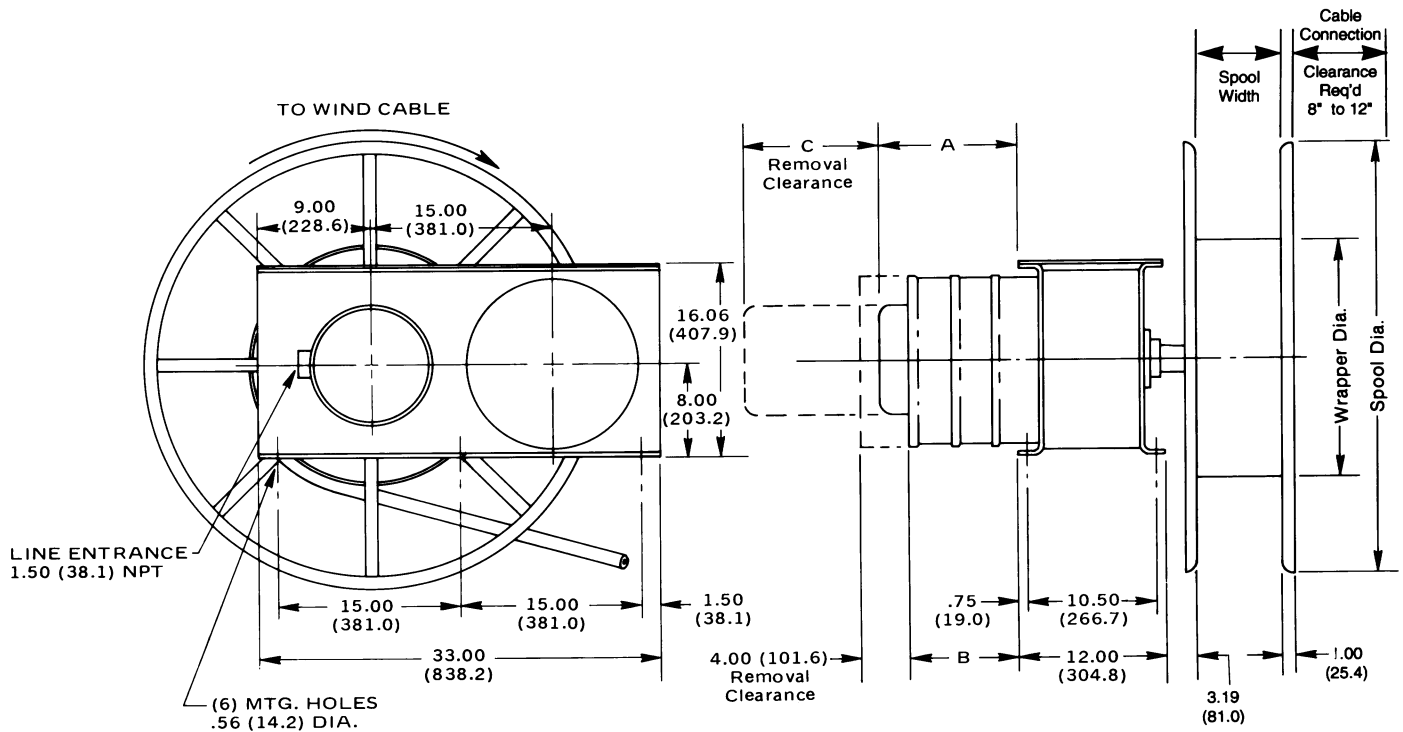
"D" Dimension Monospiral Widths		
Code	Width	
	in	(mm)
MA	0.75	(19)
MB	1.00	(25)
MC	1.25	(32)
MD	1.50	(38)
ME	1.75	(44)
MF	2.00	(51)

Motor Dimensions

		801	802	803	804	1001	1002	1003	1004
"B" Dimension	inches (mm)	1.19 (30)	3.56 (90)	5.94 (151)	8.31 (211)	2.19 (56)	5.56 (141)	8.94 (227)	12.31 (313)
Approximate Net Weight	lbs. (kg)	485 (220)	530 (240)	580 (263)	625 (284)	595 (270)	655 (297)	715 (324)	775 (352)

DIMENSION DRAWINGS – SHO SERIES - RANDOM WRAP

STEP 7



Slip Ring Housing Dimensions

Second Series of Digits in Model Number		23	63	103	143	203	303
		33	83	123	163	243	363
		43	27	312	412		
			37				
			47				
			212				
			220				
		320					
		420					
"A" Dimension	inches (mm)	10.69 (272)	13.19 (335)	15.69 (399)	18.19 (462)	23.19 (589)	30.19 (767)
"C" Dimension	inches (mm)	8.50 (216)	11.00 (279)	13.50 (343)	16.00 (406)	21.00 (533)	29.00 (737)

Motor Dimensions

Last Series of Digits in Model Number		801	802	803	804	1001	1002	1003	1004
"B" Dimension	inches (mm)	1.19 (30)	3.56 (90)	5.94 (151)	8.31 (211)	2.19 (56)	5.56 (141)	8.94 (227)	12.31 (313)
Approximate Net Weight	lbs. (kg)	485 (220)	530 (240)	580 (263)	625 (284)	595 (270)	655 (297)	715 (324)	775 (352)