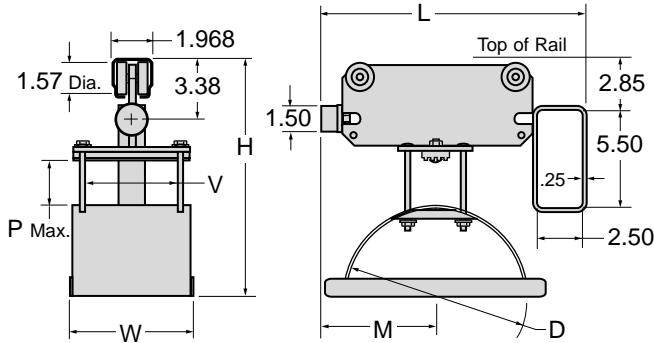


Series C60-F Components & Dimensions, con't.

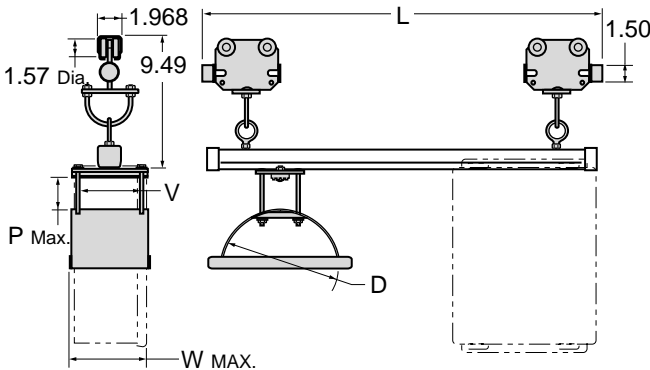
FLAT CLAMP DESIGN FOR FLAT CABLE

All dimensions in inches unless otherwise specified.



Tow Trolley *Standard...One Required*

Model Number <small>w/ Std Hardware & Wheels</small>	Saddle Radius R	Saddle Dia. D	Window Height P	Window Width V	Overall Length L	Overall Width W	Top of Track H	Saddle Locator M
C60-F03-1102T-Z-S	1.56	3.12	1.19	2.62	11.75	3.94	8.39	3.17
C60-F03-1105T-Z-S	1.56	3.12	1.19	5.00	11.75	6.31	8.39	3.17
C60-F03-2002T-Z-S	1.56	3.12	2.00	2.62	11.75	3.94	9.21	3.95
C60-F03-2005T-Z-S	1.56	3.12	2.00	5.00	11.75	6.31	9.21	3.95
C60-F04-1002T-Z-S	2.47	4.94	1.06	2.62	11.75	4.31	9.24	3.95
C60-F04-1005T-Z-S	2.47	4.94	1.06	5.00	11.75	6.69	9.24	3.95
C60-F04-2002T-Z-S	2.47	4.94	2.06	2.62	11.75	4.31	10.24	4.95
C60-F04-2005T-Z-S	2.47	4.94	2.06	5.00	11.75	6.69	10.24	4.95



Control Unit Trolley *Optional... Replaces Tow Trolley*

Model Number <small>w/ Std Hardware & Wheels</small>	Saddle Radius R	Saddle Dia. D	Window Height P	Window Width V	Overall Length L	Overall Width W
C60-F03-1102U-Z-S	1.56	3.12	1.19	2.62	45.06	6.00
C60-F03-1105U-Z-S	1.56	3.12	1.19	5.00	45.06	6.31
C60-F03-2002U-Z-S	1.56	3.12	2.00	2.62	45.06	6.00
C60-F03-2005U-Z-S	1.56	3.12	2.00	5.00	45.06	6.31
C60-F04-1002U-Z-S	2.47	4.94	1.06	2.62	45.06	6.00
C60-F04-1005U-Z-S	2.47	4.94	1.06	5.00	45.06	6.69
C60-F04-2002U-Z-S	2.47	4.94	2.06	2.62	45.06	6.00
C60-F04-2005U-Z-S	2.47	4.94	2.06	5.00	45.06	6.69

Note: Rail Mounted Junction Boxes are available.
See "Accessories" section at back of catalog.

GLEASON TRACK • MASTER™

SERIES C60-M

For ROUND or FLAT Cable

- MIXED CLAMP DESIGN
- 1.57" DIA. PRECISION BALL BEARING STEEL WHEELS STANDARD

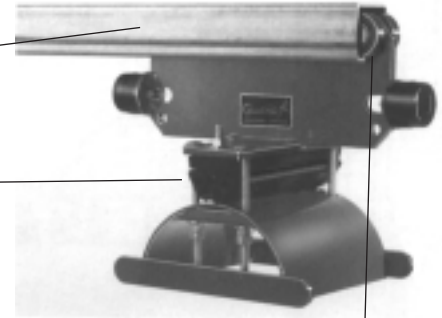
- MAX SADDLE DIAMETER = 12.59"
- MAX TROLLEY LOAD = 125 lbs.
- TRAVEL SPEEDS UP TO 450 fpm
- ACCELERATION—Consult us if over 2.0 ft/sec²
- MAX TRAVEL = 500 ft.—Consult us if greater

Standard Trolley Design

- 1.57" Dia. precision ball bearing wheels
- Bearings are pre-lubricated for life
- Tow trolley included as standard
- Hardware is zinc plated
- Orange baked polyester powder finish
- Cable Clamp allows cable package height to vary up to 0.25"

GALVANIZED C-RAIL

FLAT CABLE CLAMP



S

STEEL WHEELS

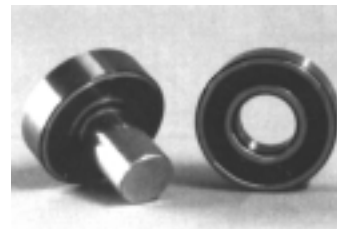
Model Number Explained

For STANDARD DESIGN, specific model numbers are on the following pages.

TYPE	CLAMP STYLE	SADDLE DIAMETER	WINDOW HEIGHT	WINDOW WIDTH	ITEM	Standard Hardware HARDWARE MATERIAL	Standard Wheels** WHEEL MATERIAL
#C60	M	06	13	02	I -	Z -	S
Chosen by computer						Hardware Option	
Options you select						S STAINLESS	S
* Example above is for INTERMEDIATE TROLLEY (I) Use same option changes (at right) for other components as required.							**Not applicable to end clamps

Option Design Features

CODE	OPTION
<input checked="" type="checkbox"/>	STAINLESS STEEL HARDWARE
<input type="checkbox"/>	OTHER FINISHES AVAILABLE – PLEASE CONTACT US
<input type="checkbox"/>	FACTORY PRE-ASSEMBLY ON SHIPPING FRAME



STANDARD STEEL WHEELS

Track Hardware See detail pages at back of catalog

- RAIL TRACK SECTIONS
- RAIL COUPLER ASSEMBLIES
- VINYL END CAPS
- RAIL HANGER ASSEMBLIES
- RAIL ENDSTOP ASSEMBLIES

Accessories See detail pages at back of catalog

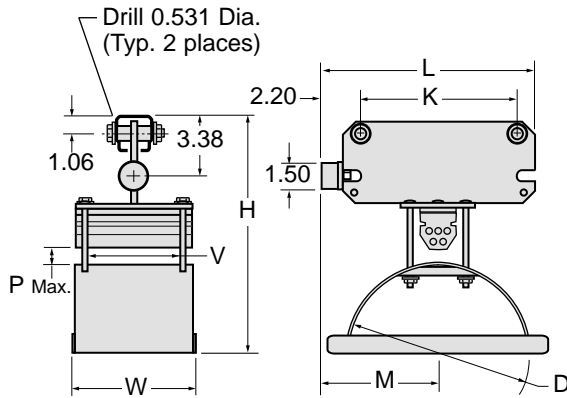
- CABLE CLAMPS - FLAT DESIGN
- JUNCTION BOX(ES)
- CABLE - ROUND OR FLAT
- TERMINAL BLOCKS
- TY-WRAPS
- HOSE - GENERAL PURPOSE or HYDRAULIC
- TOW CHAINS
- CABLE GLANDS FOR SINGLE CABLES OR GROUPS

Series C60-M Components & Dimensions

MIXED CLAMP DESIGN for FLAT or ROUND CABLE or HOSE

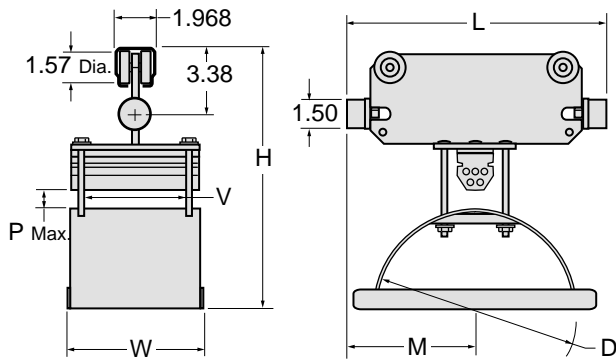
All dimensions in inches unless otherwise specified.

End Clamp *One Required*



Model Number w/ Std Hardware & Wheels	Saddle Radius R	Saddle Dia. D	Window Height P	Window Width V	Overall Length L	Overall Width W	Top of Track H	Saddle Locator M	Bolt Spacing K
C60-M06-1302E-Z	3.16	6.31	1.38	2.62	8.69	4.31	11.62	4.94	5.50
C60-M06-1305E-Z	3.16	6.31	1.38	5.00	8.69	6.69	11.62	4.94	5.50
C60-M06-2702E-Z	3.16	6.31	2.75	2.62	11.44	4.31	13.03	6.33	8.25
C60-M06-2705E-Z	3.16	6.31	2.75	5.00	11.44	6.69	13.03	6.33	8.25
C60-M07-2002E-Z	3.94	7.88	2.00	2.62	11.44	4.31	13.03	6.33	8.25
C60-M07-2005E-Z	3.94	7.88	2.00	5.00	11.44	6.69	13.03	6.33	8.25
C60-M07-3502E-Z	3.94	7.88	3.56	2.62	14.56	4.31	14.59	7.89	11.38
C60-M07-3505E-Z	3.94	7.88	3.56	5.00	14.56	6.69	14.59	7.89	11.38
C60-M09-1005E-Z	4.94	9.88	1.00	5.00	11.44	6.69	13.03	6.33	8.25
C60-M09-1008E-Z	4.94	9.88	1.00	8.56	11.44	10.25	13.03	6.33	8.25
C60-M09-2505E-Z	4.94	9.88	2.56	5.00	14.58	6.69	14.59	7.89	11.38
C60-M09-2508E-Z	4.94	9.88	2.56	8.56	14.58	10.25	14.59	7.89	11.38
C60-M12-1105E-Z	6.30	12.59	1.19	5.00	14.58	6.69	14.59	7.89	11.38
C60-M12-1108E-Z	6.30	12.59	1.19	8.56	14.58	10.25	14.59	7.89	11.38
C60-M12-3105E-Z	6.30	12.59	3.12	5.00	18.52	6.69	16.52	9.86	15.31
C60-M12-3108E-Z	6.30	12.59	3.12	8.56	18.52	10.25	16.52	9.86	15.31

Intermediate Trolley *Quantity as Required*



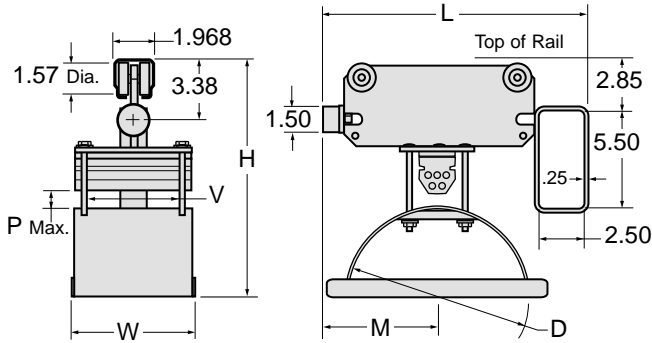
Model Number w/ Std Hardware & Wheels	Saddle Radius R	Saddle Dia. D	Window Height P	Window Width V	Overall Length L	Overall Width W	Top of Track H	Saddle Locator M
C60-M06-1302I-Z-S	3.16	6.31	1.38	2.62	9.91	4.31	11.62	4.95
C60-M06-1305I-Z-S	3.16	6.31	1.38	5.00	9.91	6.69	11.62	4.95
C60-M06-2702I-Z-S	3.16	6.31	2.75	2.62	12.66	4.31	13.03	6.33
C60-M06-2705I-Z-S	3.16	6.31	2.75	5.00	12.66	6.69	13.03	6.33
C60-M07-2002I-Z-S	3.94	7.88	2.00	2.62	12.66	4.31	13.03	6.33
C60-M07-2005I-Z-S	3.94	7.88	2.00	5.00	12.66	6.69	13.03	6.33
C60-M07-3502I-Z-S	3.94	7.88	3.56	2.62	15.78	4.31	14.59	7.89
C60-M07-3505I-Z-S	3.94	7.88	3.56	5.00	15.78	6.69	14.59	7.89
C60-M09-1005I-Z-S	4.94	9.88	1.00	5.00	12.66	6.69	13.03	7.89
C60-M09-1008I-Z-S	4.94	9.88	1.00	8.56	12.66	10.25	13.03	7.89
C60-M09-2505I-Z-S	4.94	9.88	2.56	5.00	15.78	6.69	14.59	7.89
C60-M09-2508I-Z-S	4.94	9.88	2.56	8.56	15.78	10.25	14.59	7.89
C60-M12-1105I-Z-S	6.30	12.59	1.19	5.00	15.78	6.69	14.59	7.89
C60-M12-1108I-Z-S	6.30	12.59	1.19	8.56	15.78	10.25	14.59	7.89
C60-M12-3105I-Z-S	6.30	12.59	3.12	5.00	19.72	6.69	16.52	9.86
C60-M12-3108I-Z-S	6.30	12.59	3.12	8.56	19.72	10.25	16.52	9.86

Series C60-M Components & Dimensions, con't.

MIXED CLAMP DESIGN for FLAT or ROUND CABLE or HOSE

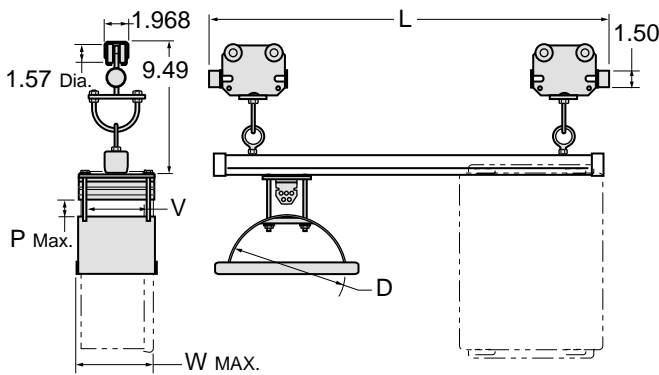
All dimensions in inches unless otherwise specified.

Tow Trolley *Standard...One Required*



Model Number	Saddle Radius R	Saddle Dia. D	Window Height P	Window Width V	Overall Length L	Overall Width W	Top of Track H	Saddle Locator M
<i>w/ Std Hardware & Wheels</i>								
C60-M06-1302T-Z-S	3.16	6.31	1.38	2.62	11.75	4.31	11.62	4.95
C60-M06-1305T-Z-S	3.16	6.31	1.38	5.00	11.75	6.69	11.62	4.95
C60-M06-2702T-Z-S	3.16	6.31	2.75	2.62	14.50	4.31	13.03	6.33
C60-M06-2705T-Z-S	3.16	6.31	2.75	5.00	14.50	6.69	13.03	6.33
C60-M07-2002T-Z-S	3.94	7.88	2.00	2.62	14.50	4.31	13.03	6.33
C60-M07-2005T-Z-S	3.94	7.88	2.00	5.00	14.50	6.69	13.03	6.33
C60-M07-3502T-Z-S	3.94	7.88	3.56	2.62	17.62	4.31	14.59	7.89
C60-M07-3505T-Z-S	3.94	7.88	3.56	5.00	17.62	6.69	14.59	7.89
C60-M09-1005T-Z-S	4.94	9.88	1.00	5.00	14.50	6.69	13.03	6.33
C60-M09-1008T-Z-S	4.94	9.88	1.00	8.56	14.50	10.25	13.03	6.33
C60-M09-2505T-Z-S	4.94	9.88	2.56	5.00	17.62	6.69	14.59	7.89
C60-M09-2508T-Z-S	4.94	9.88	2.56	8.56	17.62	10.25	14.59	7.89
C60-M12-1105T-Z-S	6.30	12.59	1.19	5.00	17.62	6.69	14.59	7.89
C60-M12-1108T-Z-S	6.30	12.59	1.19	8.56	17.62	10.25	14.59	7.89
C60-M12-3105T-Z-S	6.30	12.59	3.12	5.00	21.56	6.69	16.52	9.86
C60-M12-3108T-Z-S	6.30	12.59	3.12	8.56	21.56	10.25	16.52	9.86

Control Unit Trolley *Optional... Replaces Tow Trolley*



Model Number	Saddle Radius R	Saddle Dia. D	Window Height P	Window Width V	Overall Length L	Overall Width W
<i>w/ Std Hardware & Wheels</i>						
C60-M06-1302U-Z-S	3.16	6.31	1.38	2.62	45.06	6.00
C60-M06-1305U-Z-S	3.16	6.31	1.38	5.00	45.06	6.69
C60-M06-2702U-Z-S	3.16	6.31	2.75	2.62	45.06	6.00
C60-M06-2705U-Z-S	3.16	6.31	2.75	5.00	45.06	6.69
C60-M07-2002U-Z-S	3.94	7.88	2.00	2.62	45.06	6.00
C60-M07-2005U-Z-S	3.94	7.88	2.00	5.00	45.06	6.69
C60-M07-3502U-Z-S	3.94	7.88	3.56	2.62	45.06	6.00
C60-M07-3505U-Z-S	3.94	7.88	3.56	5.00	45.06	6.69
C60-M09-1005U-Z-S	4.94	9.88	1.00	5.00	45.06	6.69
C60-M09-1008U-Z-S	4.94	9.88	1.00	8.56	45.06	10.25
C60-M09-2505U-Z-S	4.94	9.88	2.56	5.00	45.06	6.69
C60-M09-2508U-Z-S	4.94	9.88	2.56	8.56	45.06	10.25
C60-M12-1105U-Z-S	6.30	12.59	1.19	5.00	45.06	6.69
C60-M12-1108U-Z-S	6.30	12.59	1.19	8.56	45.06	10.25
C60-M12-3105U-Z-S	6.30	12.59	3.12	5.00	45.06	6.69
C60-M12-3108U-Z-S	6.30	12.59	3.12	8.56	45.06	10.25

Note: Rail Mounted Junction Boxes are available.
See "Accessories" section at back of catalog.

Options Available



Options are available for most typical festoon requirements and many truly special situations. These pages list a few of the most commonly requested options. If you don't see what you need, *JUST CALL!*

1. Other Wheel Materials

Wheel materials are listed on each system series "spread" (i.e. Series C50-F on page 18) by specific item.

2. Stainless Steel Hardware

Available on all series as noted on series spread.

3. Finishes

STANDARD FINISH

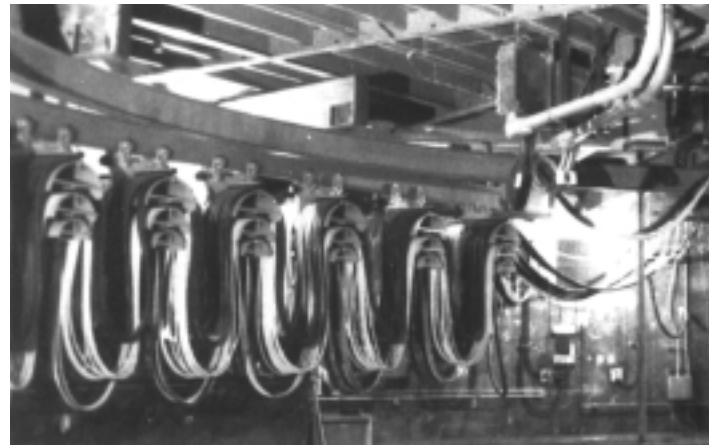
Standard Gleason finish is thermoset polyester powder coating. Independent laboratory salt spray test result indicate our standard finish shows no sign of corrosion at 288 hours vs. hot-dipped galvanized finish, which failed at 168 hours under identical conditions. Standard color is "safety orange".

OTHER FINISHES

Other finishes may be specified to suit unique conditions. When specifying other finishes, please provide detailed specifications, as finishes tend to be a localized matter to satisfy local conditions. For example, inland suppliers may not easily identify coastal spec, etc.

4. Curved Festoon Systems

Festoon systems for curved applications require special attention. Please contact us with your specific need. See photo at right.



Heavy duty festoon system modified for travel on a curved I-beam. Note two additional saddles on each trolley to handle large number of cables.

5. Non-standard Designs

Non-standard designs are available to meet your application requirements. Contact us with specification details.

6. Pre-assembly and Shipping Frame

Gleason offers complete factory pre-assembly of your festoon system. Experienced personnel will assemble all of the system components into their proper operating relationships. This reduces on-site installation time costs and possible installer confusion.

Your system will be shipped to you mounted on a shipping frame which is designed to allow your installation crew to transfer the components directly onto your C-Rail.



Accessories

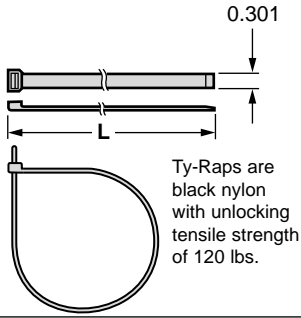


NO NEED TO SEARCH FOR THE CORRECT ACCESSORY MODEL!

When the Gleason festoon computer program elects a system, you simply indicate which accessories you desire and the correct model number will be selected for you and identified on the OUTPUT page.

These pages provide support data.

**ALL DIMENSIONS IN INCHES
UNLESS OTHERWISE INDICATED.**



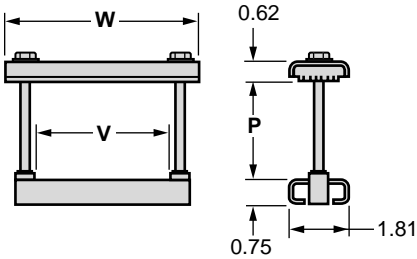
Ty-Raps are black nylon with unlocking tensile strength of 120 lbs.

Ty-Raps

MODEL NUMBER	BUNDLE RANGE	LENGTH L
TY - 08	0.19 - 2.00	8.00
TY - 13	0.19 - 3.50	13.88
TY - 30	1.50 - 9.00	30.00

Cable Clamps

FLAT CAMP DESIGN
SERIES C40-F, C50-F, C60-F



Clamping pads are neoprene.
Hardware is Zinc-plated steel.
Finish is orange polyester powder.

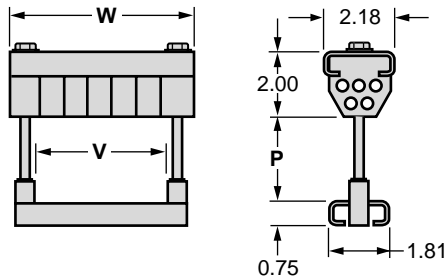
MODEL NUMBER	WINDOW V	WIDTH W
CL-F01-□-Z	1.88	3.75
CL-F02-□-Z	2.62	4.50
CL-F05-□-Z	5.00	6.88
CL-F06-□-Z	6.56	8.44
CL-F08-□-Z	8.56	10.44

May be supplied with stainless steel hardware.
Substitute "S" for "Z" in model numbers above.

PKG HGT CODE □	PKG HGT RANGE P
1	0.00 - 1.27
2	1.28 - 1.77
3	1.78 - 2.27
4	2.28 - 2.77
5	2.78 - 3.27
6	3.28 - 3.77
7	3.78 - 4.27
8	4.28 - 4.77

Code is substituted for □
to complete model number.

MIXED CAMP DESIGN
SERIES C40-F, C50-F, C60-F



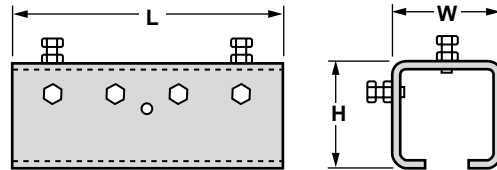
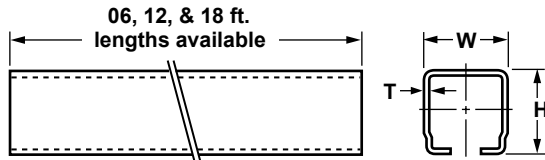
MODEL NUMBER	WINDOW V	WIDTH W
CL-M01-□-Z	1.88	3.75
CL-M02-□-Z	2.62	4.50
CL-M05-□-Z	5.00	6.88
CL-M06-□-Z	6.56	8.44
CL-M08-□-Z	8.56	10.44

May be supplied with stainless steel hardware.
Substitute "S" for "Z" in model numbers above.

PKG HGT CODE □	PKG HGT RANGE P
1	0.00 - 0.89
2	0.90 - 1.39
3	1.40 - 1.89
4	1.90 - 2.39
5	2.40 - 2.89

Track Hardware

Series C40, C50, C60



Rail Track Sections

MODEL NUMBER	WIDTH W	HEIGHT H	THICKNESS T
C40 - TR - □	1.260	1.180	0.079
C50 - TR - □	1.575	1.575	0.109
C60 - TR - □	1.968	1.968	0.123

Substitute length (06, 12, 18) for □
to complete model number.

Rail Coupler Assemblies

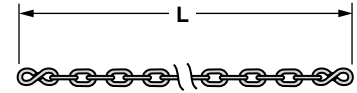
MODEL NUMBER	LENGTH L	WIDTH W	HEIGHT H
C40 - CP - Z	4.00	1.59	1.47
C50 - CP - Z	5.00	2.00	2.00
C60 - CP - Z	6.25	2.39	2.39

May be supplied with stainless steel hardware.
Substitute "S" for "Z" in model numbers above.

Series C50, C60 Tow Chain

MODEL NUMBER	HARDWARE OPTION
TC - □□.□ - Z	Zinc Plated Steel
TC - □□.□ - S	Stainless Steel

Tow Chains are straight-link No. 2/0 machine chain with zinc plate finish. Standard hardware is zinc plated steel. Load limit is 350 lbs.



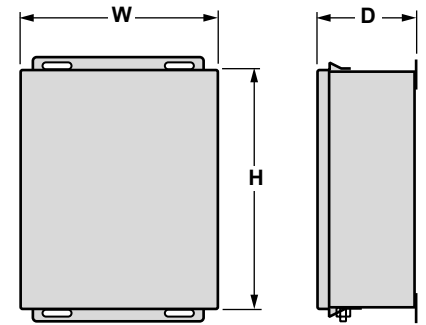
Substitute desired length in FEET for "□□.□" to complete Model Number. Round up in half-foot increments.

Junction Box WALL AND RAIL MOUNTED

MODEL NUMBER	RATING
JB - 03 - □ - W	NEMA 3
JB - 04 - □ - W	NEMA 4
JB - 4X - □ - W	NEMA 4X
JB - 12 - □ - W	NEMA 12
JB - 13 - □ - W	NEMA 13

CODE □	HEIGHT D	WIDTH W	DEPTH G
10	10.00	8.00	4.00
12	12.00	10.00	5.00
14	14.00	12.00	6.00
16	16.00	14.00	6.00

Substitute code above for "□" to complete Model Number.

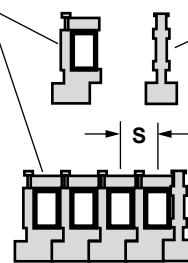


Substitute "R" for "W" in model number above for Rail Mounted junction box.

Terminal Blocks

MODEL NUMBER	S	MAX RATED AMPERES	FOR AWG SIZES
TB - 050	0.38	50	#24 thru #10
TB - 090	0.56	90	#8 thru #6
TB - 155	0.75	155	#4 thru #2
TB - 270	1.19	270	#1 thru #3/0

Ampere ratings above are general guidelines. Consult NEC for specific data.



End Sections

MODEL NUMBER
TE - 050
TE - 090
TE - 155
TE - 270

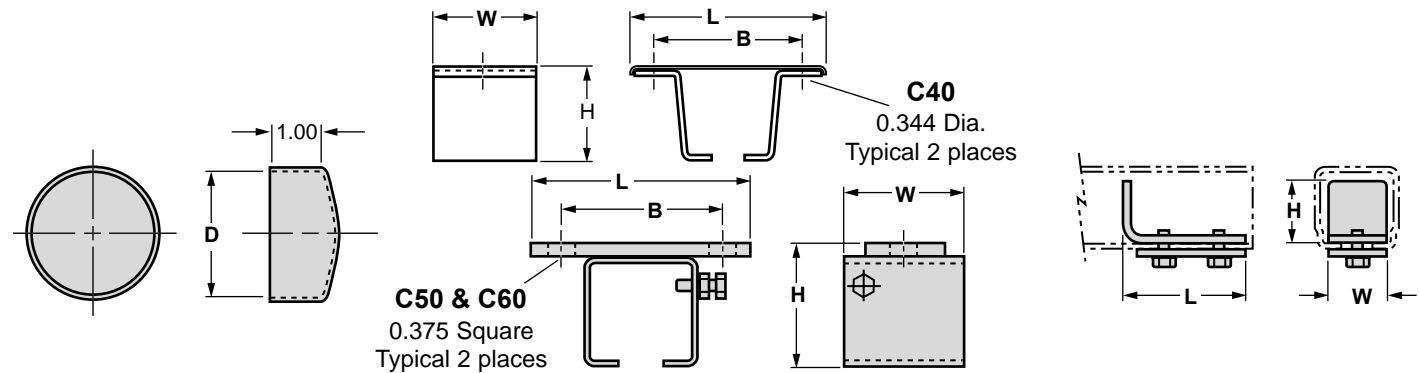
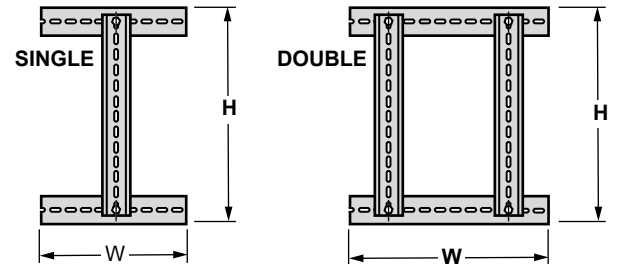
Terminal Track Assembly

MODEL NUMBER	STYLE
TT - □ - S	Single
TT - □ - D	Double

Tracks mount in junction boxes and hold terminal blocks.

CODE □	HEIGHT D	WIDTH W
10	9.44	7.00
12	11.44	9.00
14	13.44	11.00
16	15.44	13.00

Substitute code above for "□" to complete Model Number.



Vinyl End Caps

MODEL NUMBER	DIAMETER D
C40 - EC	1.50
C50 - EC	1.88
C60 - EC	2.38

Rail Hanger Assemblies

MODEL NUMBER	LENGTH L	WIDTH W	HEIGHT H	BOLTS B
C40-HB-Z	3.25	1.62	1.38	2.38
C50-HB-Z	4.12	2.00	2.25	3.12
C60-HB-Z	5.00	3.12	2.70	4.00

May be supplied with stainless steel hardware. Substitute "S" for "Z" in model numbers above.

Rail Endstop Assemblies

MODEL NUMBER	LENGTH L	WIDTH W	HEIGHT H
C40-ES-Z	2.00	0.88	0.88
C50-ES-Z	2.25	1.18	1.18
C60-ES-Z	4.00	1.75	2.25

May be supplied with stainless steel hardware. Substitute "S" for "Z" in model numbers above.

Flat Cable Data

NEOPRENE FLAT CABLE

AWG Size	No. Cond.	Thick x Width	Weight lb/ft
16	4	0.225 x 0.600	0.107
	7	0.225 x 0.995	0.188
	8	0.225 x 1.120	0.208
	10	0.245 x 1.420	0.288
	12	0.245 x 1.655	0.342
14	24	0.470 x 2.030	0.705
	4	0.275 x 0.785	0.181
	7	0.275 x 1.300	0.309
	8	0.275 x 1.455	0.350
	12	0.295 x 2.165	0.557
12	24	0.610 x 2.675	1.162
	4	0.335 x 0.945	0.268
	7	0.335 x 1.535	0.457
10	12	0.330 x 2.440	0.760
	4	0.335 x 1.045	0.335
8	7	0.355 x 1.730	0.577
	4	0.415 x 1.300	0.510
6	7	0.435 x 2.165	0.886
	4	0.490 x 1.495	0.739
4	7	0.510 x 2.640	1.324
	4	0.550 x 1.810	1.061
2	7	0.610 x 3.110	1.888
	4	0.650 x 2.085	1.444
1/0	4	0.750 x 2.440	1.988
2/0	4	0.865 x 2.795	2.687
3/0	4	0.965 x 3.190	3.675

PVC FLAT CABLE

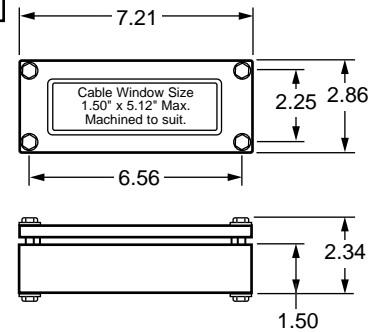
AWG Size	No. Cond.	Thick x Width	Weight lb/ft
16	4	0.215 x 0.625	0.100
	8	0.215 x 1.160	0.180
	12	0.215 x 1.655	0.270
14	4	0.225 x 0.655	0.120
	8	0.225 x 1.225	0.220
	12	0.225 x 1.750	0.340
12	4	0.245 x 0.740	0.160
	5	0.245 x 0.895	0.210
	8	0.245 x 1.390	0.320
10	4	0.285 x 0.910	0.240
8	4	0.385 x 1.240	0.420
6	4	0.450 x 1.500	0.600
	5	0.450 x 1.785	0.800
4	4	0.510 x 1.740	0.750
2	4	0.580 x 2.005	1.270

MULTI-CABLE GLAND

Cast Aluminum

MODEL NUMBER	DESCRIPTION
GL-MA-01	Multi-cable Gland
GL-MA-CC	Cutting charge*

* Rubber insert ships UNCUT as standard. Gleason will machine to suit cable package for a nominal charge.



FLAT CABLE GLANDS

Brass

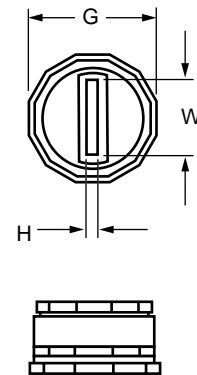
MODEL NUMBER
GL-FB-□

Plastic

MODEL NUMBER
GL-FP-□

CODE □	D	BRASS W	PLASTIC W	G	CLEARANCE HOLE REQ'D
16	0.00 - 0.20	0.00 - 0.63	0.00 - 0.59	1.14	0.906
21	0.12 - 0.31	0.35 - 0.83	0.35 - 0.82	1.40	1.125
29	0.16 - 0.45	0.55 - 1.18	0.55 - 1.02	1.81	1.469
36	0.16 - 0.45	0.94 - 1.57	0.94 - 1.34	2.21	1.875
42	0.20 - 0.47	1.14 - 1.77	1.14 - 1.57	2.56	2.125
48	1.20 - 0.47	1.34 - 1.97	1.14 - 1.77	2.72	2.375

Code is substituted for □ to complete model number



ROUND CABLE GLANDS

Brass

MODEL NUMBER
GL-RB-□

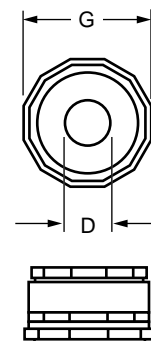
Code is substituted for □ to complete model number

Plastic

MODEL NUMBER
GL-RP-□

CODE □	D	G	CLEARANCE HOLE REQ'D
09	0.196 - 0.315	0.75	0.609
11	0.275 - 0.492	0.93	0.750
13	0.275 - 0.590	1.00	0.812
16	0.315 - 0.630	1.14	0.906
21	0.433 - 0.866	1.40	1.125
29	0.748 - 1.220	1.81	1.469
36	0.984 - 1.378	2.21	1.875
42	1.397 - 1.811	2.56	2.125
48	1.594 - 1.988	2.72	2.375

CODE □	D	G	CLEARANCE HOLE REQ'D
07	0.090 - 0.265	0.72	0.500
09	0.187 - 0.312	0.75	0.609
11	0.231 - 0.394	0.93	0.750
13	0.270 - 0.480	1.00	0.812
16	0.428 - 0.546	1.14	0.906
21	0.545 - 0.709	1.40	1.125
29	0.709 - 1.000	1.81	1.469



Round Cable & Hose Data

TYPE SO CABLE — 600 VOLT

16 AWG			14 AWG			12 AWG			10 AWG		
No. Cond.	Dia. In.	Weight lb/ft	No. Cond.	Dia. In.	Weight lb/f	No. Cond.	Dia. In.	Weight lb/f	No. Cond.	Dia. In.	Weight lb/f
2	0.374	0.094	2	0.512	0.158	2	0.586	0.204	2	0.638	0.250
3	0.393	0.110	3	0.538	0.184	3	0.616	0.244	3	0.671	0.310
4	0.427	0.144	4	0.584	0.224	4	0.668	0.282	4	0.730	0.371
5	0.510	0.156	5	0.665	0.260	5	0.725	0.322	5	0.796	0.425
6	0.565	0.178	6	0.710	0.302	6	0.805	0.380	6	0.883	0.485
7	0.605	0.202	7	0.710	0.329	7	0.865	0.435	7	0.982	0.593
8	0.645	0.222	8	0.770	0.373	8	0.920	0.475	8	1.052	0.650
9	0.720	0.268	9	0.820	0.414	9	1.020	0.550	9	1.127	0.725
10	0.720	0.278	10	0.885	0.434	10	1.020	0.581	10	1.127	0.760
12	0.740	0.305	12	0.905	0.481	12	1.050	0.645	12	1.153	0.850
14	0.775	0.348	14	1.000	0.556	14	1.105	0.743	14	1.287	1.118
16	0.825	0.386	16	1.050	0.657	16	1.160	0.840	20	1.455	1.400
18	0.860	0.430	18	1.110	0.715	18	1.227	0.925			
20	0.900	0.466	20	1.150	0.785	20	1.287	1.005			
22	0.940	0.503	22	1.210	0.857	22	1.370	1.140			
24	1.015	0.564	24	1.320	0.920	24	1.443	1.225			
26	1.015	0.604	26	1.350	0.986						
28	1.070	0.654	28	1.370	1.098						
30	1.070	0.677	30	1.390	1.138						
32	1.120	0.714									
34	1.155	0.807									
36	1.155	0.820									

TYPE W CABLE — 600 VOLT

AWG Size	No. Cond.	Dia. In.	Weight lb/ft
8	1	0.454	0.137
	2	0.788	0.328
	3	0.894	0.470
	4	0.966	0.583
6	1	0.539	0.199
	2	0.872	0.425
	3	0.983	0.614
	4	1.068	0.769
	5	1.159	0.938
4	1	0.596	0.267
	2	1.040	0.780
	3	1.068	0.797
	4	1.166	1.019
	5	1.335	1.307
2	1	0.666	0.365
	2	1.177	0.888
	3	1.244	1.152
	4	1.326	1.429
1	3	1.413	1.491
	4	1.548	1.877
1/0	1	0.796	0.543
	2	1.454	1.386
	3	1.539	1.805
	4	1.686	2.309
2/0	1	0.849	0.649
	2	1.555	1.640
	3	1.647	2.154
3/0	4	1.807	2.738
	4	1.942	3.320
4/0	1	0.973	0.940
	3	1.933	3.147
	4	2.100	4.044
250	1	1.055	1.113
350	1	1.174	1.471
500	1	1.325	2.007

TYPE G-GC CABLE — 600 VOLT

AWG Size	No. Cond.	Dia. In.	Weight lb/ft
8	3	0.915	0.661
6	3	1.000	0.792
4	3	1.120	1.088
2	3	1.250	1.436
1	3	1.440	1.856
1/0	3	1.565	2.270
2/0	3	1.630	2.660
3/0	3	1.800	3.290
4/0	3	2.025	4.147
250	3	2.280	5.108
350	3	2.635	7.058
500	3	2.865	8.900

Whenever possible, refer to specific manufacturer's information regarding cable or hose. If this information is not available, these charts are composites and may be used as guides to typical cable and hose size and weights.

Refer to the National Electric Code for ampere ratings and other details.

HOSE GENERAL PURPOSE

Listings for general purpose hose do NOT include fluid weight. Specific fluid weights should be added when figuring Total Cable/Hose Weight.

I.D. In.	Braid	O.D. In.	PSI (working)	Weight lb/ft
.25	2	0.59	300	0.13
.38	2	0.72	300	0.18
.50	2	0.88	300	0.23
.75	2	1.16	300	0.37
1.00	2	1.44	300	0.64
1.25	2	1.78	300	1.01
1.50	2	2.03	300	1.06

HOSE SINGLE HYDRAULIC

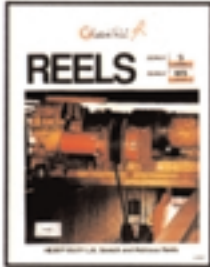
Listings for single hydraulic hose do NOT include fluid weight. Specific fluid weights should be added when figuring Total Cable/Hose Weight.

I.D. In.	Braid	O.D. In.	PSI (working)	Weight lb/ft
.25	2	0.58	5000	0.23
.38	2	0.73	4000	0.35
.50	2	0.86	3500	0.42
.75	2	1.14	2250	0.60
1.00	2	1.48	2000	0.89
1.25	2	1.87	1625	1.40

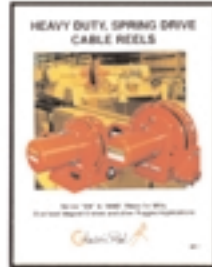
Cable Management

Since 1911, Gleason Reel Corp. has been in the business of CABLE MANAGEMENT. Our products are designed to convey and protect valuable cables and hoses that power and control moving machines of all types. They improve productivity and safety on the job by moving cables and hoses away from hazardous locations on machinery or the shop floor into a controlled environment. Whether you choose Reels for efficient storage and payout from virtually any angle, Festoon Systems for overhead applications or PowerTrak® for protection on machinery in motion, your cables and/or hoses will last longer and provide better service with a cable management system from **Gleason Reel Corp...**

...The Cable & Hose Management Company!



Bulletin "CR"
Heavy Duty
Spring Driven
Electric Cable Reels
General Industrial



Bulletin "MR"
Extra Heavy Duty
Spring Driven
Electric Cable Reels
Demanding Service



Bulletin "VMR"
Large Retrieving
Motor Driven
Electric Cable Reels
Heavy Duty Industrial



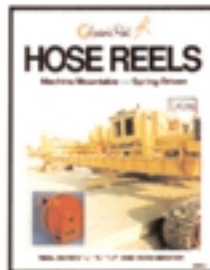
Bulletin "RET"
Long Travel Length
Motor Driven
Electric Cable Reels
Standard Industrial



Bulletin "PSR"
Lifting & Lowering
Motor Driven
Electric Cable Reels
Push-Button Reels



**Cable and Hose Reels
for Emergency Vehicles**
Specialty Reels



Bulletin "HRM"
Various Types
Spring Driven
Hose Reels
General Industrial



Bulletin "SR"
Slip Rings
Unitized Design
Low & High Amperage
Low & Medium Voltage



Bulletin "PTG"
Non-Metallic
Cable Chain
For Hose & Cable
Lightweight, Economical



Bulletin "PT"
Rugged Steel
Cable Chain
For Hose & Cable
Standard & Mill Duty



Bulletin "FC"
Rugged Steel
C-Rail Mounted
Festoon Systems
General Industrial



Bulletin "FB"
Heavy Duty
I-Rail Mounted
Festoon Systems
Heavy Duty Port Types



HUBBELL A Hubbell Company

Gleason Reel Corp.

P.O. Box 26 • 600 South Clark St.
Mayville, Wisconsin 53050-0026
Phone: 920-387-4120
Fax: 920-387-4189

In your area contact: