

# T-TRACK FESTOON SYSTEMS

**T-TRACK** Heavy Duty Festoon Cable Systems are specially designed for applications where a more robust system is required to support heavier loads at wider support spacings. Made of a high strength aluminum extrusion, these systems are rugged enough to handle the most demanding applications.

The track is supplied in convenient lengths which simply bolt together with a heavy duty joint assembly, and it can be curved to a minimum of 48" (1.2M) at various angles if required. The trolleys have a 30lb maximum capacity and roll along the outside of the track which allows for easy inspection and changing of the rollers. These trolleys utilize the same rugged, field proven rollers that are used on the C-TRACK trolleys, and they are supplied with anti-lift rollers as a standard feature. All standard trolleys feature durable steel wheels.

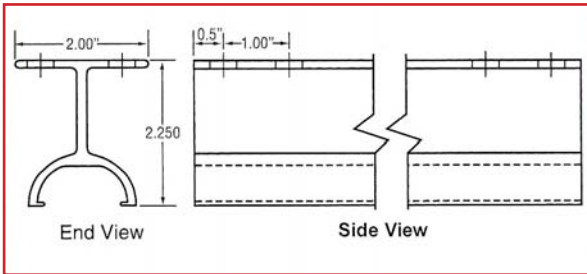


Flat Saddle Shown

### T-Track Standard Trolley

TYPE	NET WGT.	CATALOG NO.
Flat 3" dia.	3.25 lbs.	F-HC5A
Round Med. 0.60"-0.94"	3.50 lbs.	R-HC5A
Round Lrg. 0.95"-1.25"	3.75 lbs.	R-HC5AL

Flat or round cable saddle. Cable may be stacked in saddle. Features anti-lift rollers and steel wheels as standard equipment.



### T-Track Profile

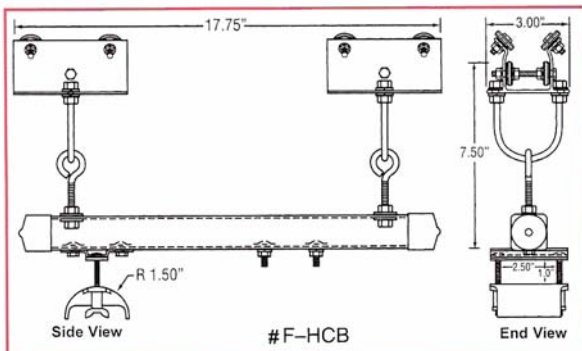
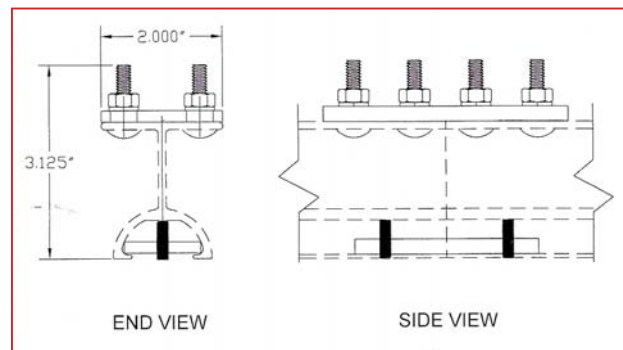
SECTION LENGTH	NET WGT.	CATALOG NO.
10 ft.	.87 lbs./ft.	F-HT10
20 ft.	.87 lbs./ft.	F-HT20

T-Track sections are made of a heavy duty aluminum extrusion, of 1/8" cross section. T-Track may be cut to customer specified lengths. T-Track may also be curved. Consult Factory for details.

### T-Track Bolted Joint Assembly

NET WGT.	CATALOG NO.
1.5 lbs.	F-HTJ1

Coupling set consists of two parts. The top portion is used to bolt sections of T-Track together. Bolts are inserted through the prepunched holes in the track sections and through the coupling plate, then securely fastened on the top. The lower portion is installed through the curved section, and then tightened with set screws.



### T-Track Control Box Assembly

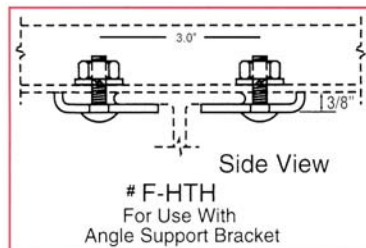
TYPE	NET WGT.	CATALOG NO.
Flat 3" dia.	5.20 lbs.	F-HCB
Round Med. 0.60"-0.94"	5.50 lbs.	R-HCB
Round Lrg. 0.95"-1.25"	5.55 lbs.	R-HCBL

Used to support the control box / pushbutton pendant station. Equipped with steel wheels, hardware, and cable saddle.

### T-Track Hanger Assemblies

SUPPORT TYPE	NET WGT.	CATALOG NO.
Angle Iron Support Brackets	0.8 lbs.	F-HTH
C-Track Crossarm	0.8 lbs.	F-HTEH/CT
Strut Track Support Bracket	0.8 lbs.	F-HTH/ST

Flat or round cable saddles with hardware used to secure cable at storage end of track. One required for each run of T-Track.



### T-Track End Clamp Assembly

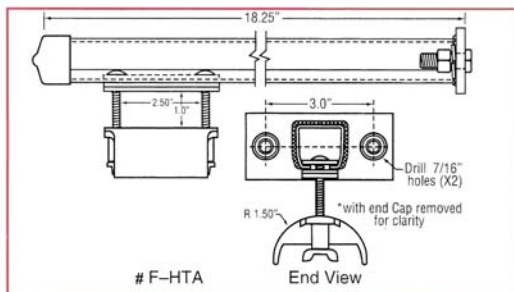
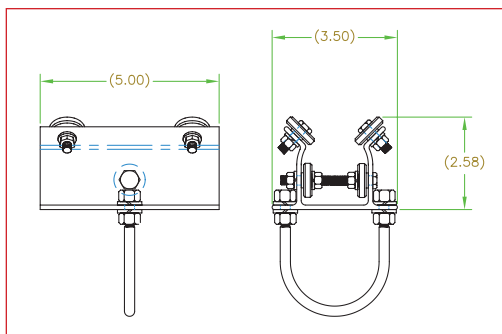
TYPE	NET WGT.	CATALOG NO.
Flat 3" dia.	0.9 lbs.	F-HTE
Round Med. 0.60"-0.94"	3.5 lbs.	R-HTE
Round Lrg. 0.95"-1.25"	3.75 lbs.	R-HTEL

Flat or round cable saddles with hardware used to secure cable at storage end of track. One required for each run of T-Track.

### T-Track Balancer Trolley

NET WGT.	CATALOG NO.
3.00 lbs.	BHC5U

Balancer trolley with U-Bolt used to hook tool-balance reels to Festoon System.



### T-Track Tow Arm

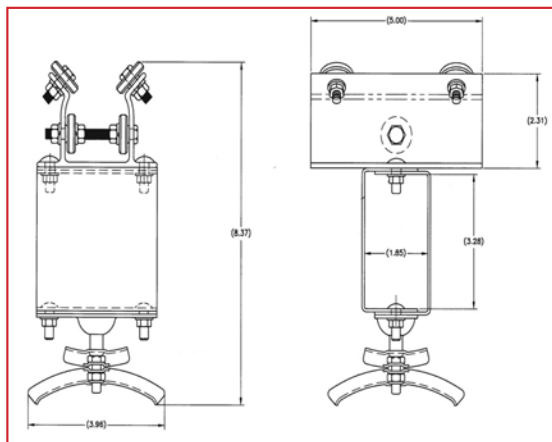
TYPE	NET WGT.	CATALOG NO.
Flat 3" dia.	3.25 lbs.	F-HTA
Round Med. 0.60"-0.94"	3.50 lbs.	R-HTA
Round Lrg. 0.95"-1.25"	3.75 lbs.	R-HTAL

Cable saddle attaches to heavy gauge steel track to mount on moving equipment which is to be electrified.

### T-Track Tow Trolleys

TYPE	NET WGT.	CATALOG NO.
Flat 3" dia.	4.50 lbs.	F-HCT
Round Med. 0.60"-0.94"	4.75 lbs.	R-HCTA
Round Lrg. 0.95"-1.25"	5.00 lbs.	R-HCTAL

Lead trolley with flat or round cable saddle. Insert system's tow arm to maneuver festoon cable system.



### T-Track End Stop Assembly

NET WGT.	CATALOG NO.
0.6 lbs.	F-HTS

Used to stop the trolleys at the active travel end of the track. One required for each run of T-Track.

**Gleason Reel Corp.**  
P.O. Box 26 • 600 South Clark St.  
Mayville, WI 53050  
Phone: 920-387-4120 • Fax: 920-387-4189  
www.hubbell-gleason.com