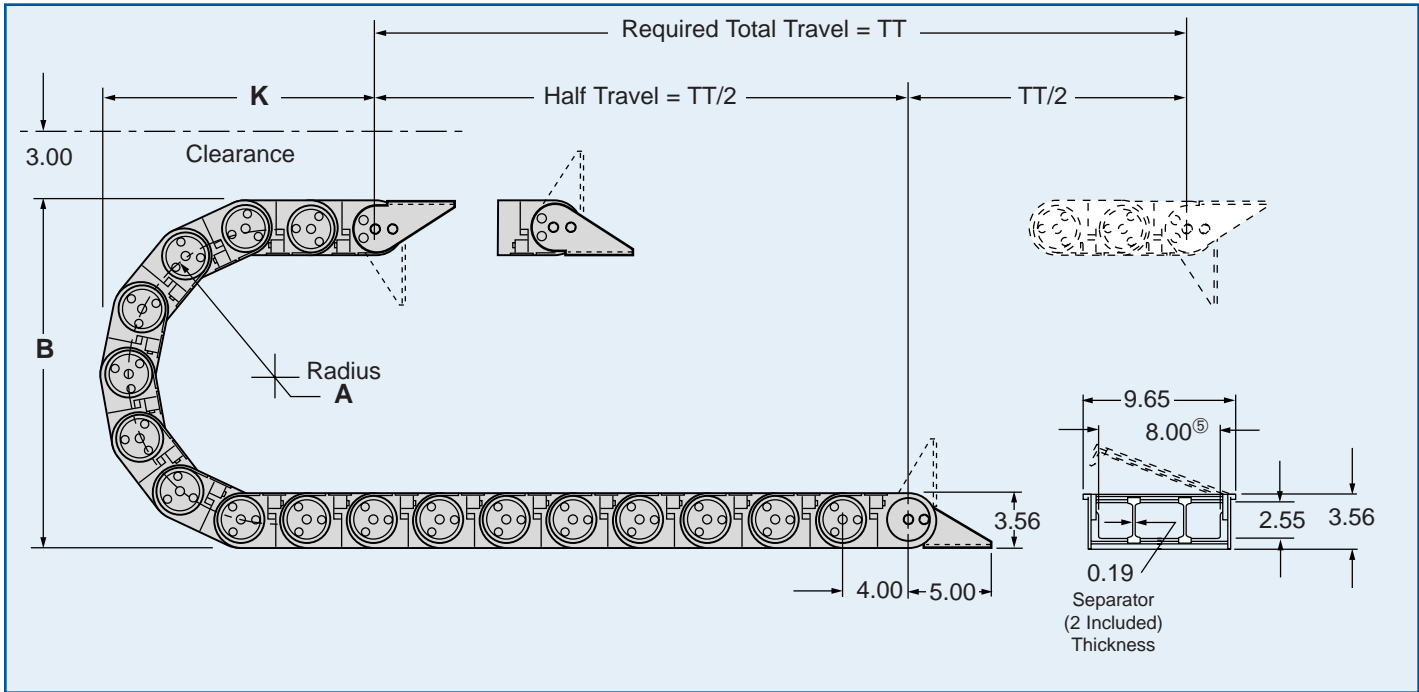


354P

GLEASON PowerTrak GRP

- HEAVY DUTY DESIGN
- FLIP-OPEN LINKS W/TWO (2) SEPARATORS INCLUDED
- MAX. CABLE/HOSE O.D. = 2.12" ^⑤
- RADII "A" AVAILABLE = 6.91" & 11.25"
- TOTAL TRAVEL SELF-SUPPORTED NO SAG = 19.0 FT ^①
- TOTAL TRAVEL SELF-SUPPORTED W/SAG = 23.5 FT ^①
- TOTAL TRAVEL W/GUIDE TRAY = 300 FT ^②
- 354P WEIGHT UNLOADED = 3.06 LBS/FT



354P Dimensions

IN INCHES UNLESS OTHERWISE INDICATED

Model Number	RADIUS A	HEIGHT B	MIN. K	CURVE L ^④
354P-6.9	6.91	17.30	12.80	2.5 FT
354P-11.2	11.25	26.00	16.30	3.5 FT

Length to order ^③ =

$$\frac{TT}{2} + L$$

NOTES:

- ① Total Travel is nominal, based on standard travel with cable/hose pkg weight of 0.5 lbs/ft., and may vary with environment. GREATER TRAVELS CAN BE ACHIEVED if PowerTrak is allowed to glide on itself within a guide tray.
- ② GREATER TRAVELS IN TRAYS CAN BE ACHIEVED. Consult the factory.

- ③ For standard travel, i.e. two-way payout as pictured above.
- ④ L = Minimum length in FEET to form PowerTrak GRP curve.
- ⑤ When Two-Piece Machined Nylon Bar Carrier is used, max. O.D. allowed is 1.69"; window width (V) available is 7.34".

Mounting Bracket Kits

DIMENSIONS IN INCHES

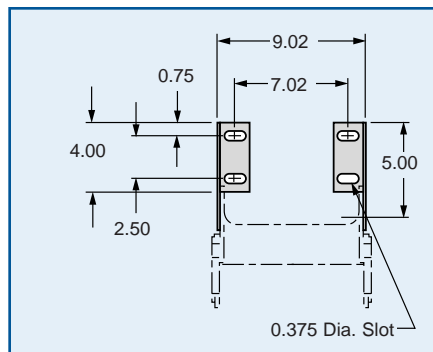
KIT No. BK354

Bracket kit for all 354P models

- Model 354P uses a two-piece bracket.
- Each bracket kit contains four (4) bracket halves.
- Specify inboard (standard) or outboard (optional) configuration on order.

Inboard

STANDARD CONFIGURATION



Outboard

OPTIONAL CONFIGURATION

