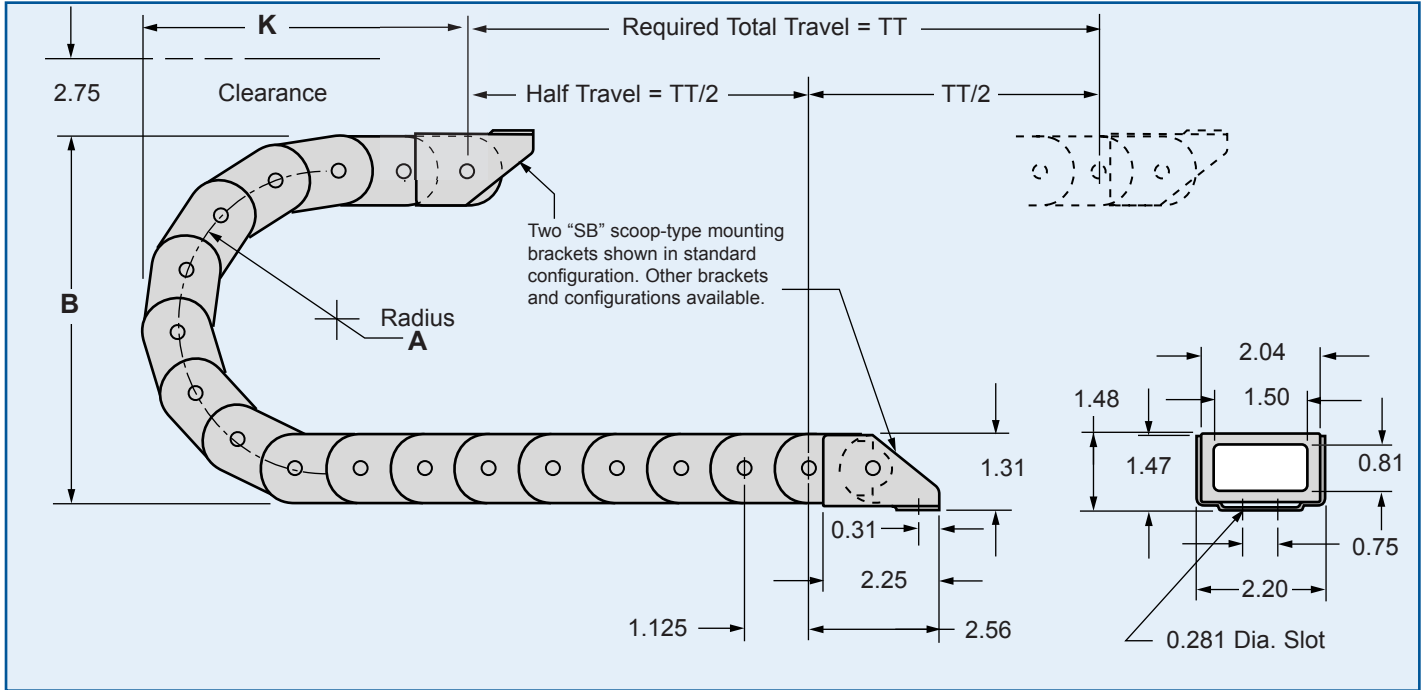


815

GLEASON PowerTube

- COMPACT DESIGN
- SOLID DESIGN, ENCLOSED LINKS
- MAX. CABLE/HOSE O.D. = 0.67"
- RADII "A" AVAILABLE = 2.34"

- TOTAL TRAVEL SELF-SUPPORTED NO SAG = 5.0 FT^①
- TOTAL TRAVEL SELF-SUPPORTED W/SAG = 6.0 FT^①
- TOTAL TRAVEL W/GUIDE TRAY = 60 FT^②
- 815 WEIGHT UNLOADED = 0.62 LBS/FT



815 Dimensions

IN INCHES UNLESS OTHERWISE INDICATED

Model Number	RADIUS A	HEIGHT B	MIN. K	CURVE L ^④
815-2.3	2.34	6.34	5.32	1.0 FT

Length to order^③ =

$$\frac{TT}{2} + L$$

NOTES:

- ① Total Travel is nominal, based on standard travel with cable/hose pkg weight of 0.5 lbs/ft., and may vary with environment. GREATER TRAVELS CAN BE ACHIEVED if PowerTube is allowed to glide on itself within a guide tray.
 ② GREATER TRAVELS IN TRAYS CAN BE ACHIEVED. Consult the factory.

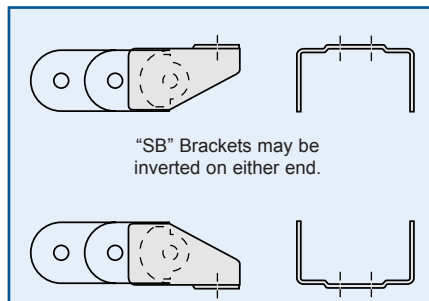
- ③ For standard travel, i.e. two-way payout as pictured above.
 ④ L = Minimum length in FEET to form PowerTube curve.

Mounting Bracket Kits

DIMENSIONS IN INCHES

• "SB" SCOOP-TYPE BRACKETS SHOWN ON DIMENSIONAL DRAWING ABOVE IN STANDARD CONFIGURATION. Virtually any combination of SB & TB brackets possible.

"SB" SCOOP-TYPE BRACKETS



"TB" FLANGE-TYPE BRACKETS

