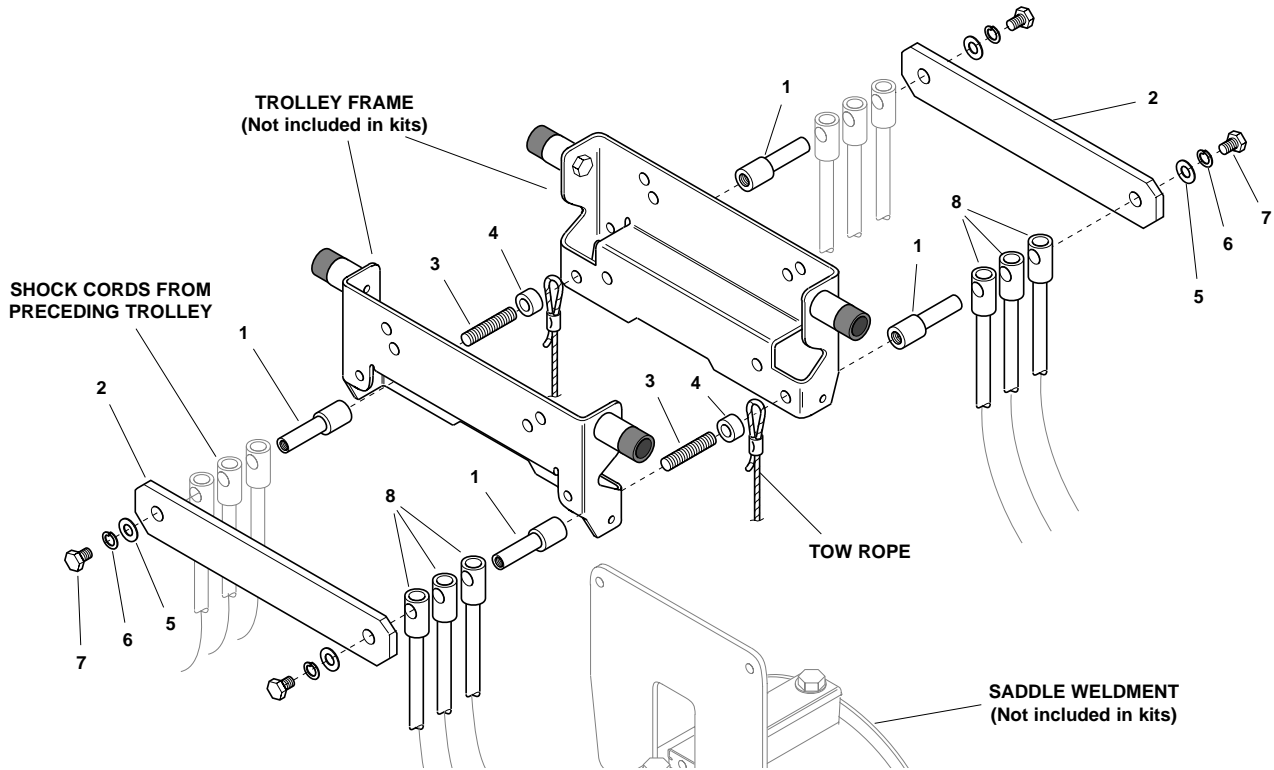




PDQ FESTOON SYSTEM

HEAVY DUTY SHOCK CORD KIT INSTALLATION INSTRUCTIONS AND PARTS LIST

Recommended for loads greater than 400 lbs. and speeds that exceed 400 fpm.



INSTALLATION INSTRUCTIONS

Refer to parts illustration, above.

NOTE: One kit is needed per trolley.

1. Remove tow rope and discard 1/2-13 bolt and nut.
2. Insert spacer (Item 4) into tow rope eyelet.
3. Rehang tow rope by inserting threaded rod (Item 3) thru holes in trolley frame and spacer (Item 4).
4. Screw mounting rods (Item 1) onto threaded rod and tighten securely. NOTE: Make sure there is an equal amount of thread for each mounting rod.
5. Slide shock cords onto mounting rods and secure with tie rod, 3/8" flat washer, 3/8" lock washer and 3/8" x 1.75" lg. cap screw. Tighten securely.

PARTS LIST

ITEM NO.	PART NO.	DESCRIPTION	QTY.
n/a	03967701	Shock Cord Kit, Complete (6" I-beam)	1 (per trolley)
n/a	03967702	Shock Cord Kit, Complete (8" I-beam)	1 (per trolley)
n/a	03967703	Shock Cord Kit, Complete (10" I-beam)	1 (per trolley)
<i>Each kit includes all parts listed below.</i>			
1		Mounting Rod	4 (per kit)
2		Tie Rod	2 (per kit)
3		3/8-16 Threaded Rod	2 (per kit)
4		Spacer	2 (per kit)
5		3/8 Flat Washer	4 (per kit)
6		3/8 Lock Washer	4 (per kit)
7		3/8-16 x 1.25 Hex Hd. Cap Screw	4 (per kit)
8		Shock Cord (Call factory with length)	2, 4, or 6 req. per kit. (Must be ordered separately.)



Gleason Reel Corp.

P.O. Box 26, 600 S. Clark St.
 Mayville, Wisconsin 53050-0026
 Phone 414/387-4120
 FAX 414/387-4189