

INSTALLATION INSTRUCTIONS

162P PowerTrak Rivet Splice

Kit is used to splice Gleason style 162P links with special 0.152" diameter holes. Each kit consists of four (4) pop rivets and four (4) flat washers. A standard duty blind rivet tool with a nosepiece for .125" dia. rivets is required.

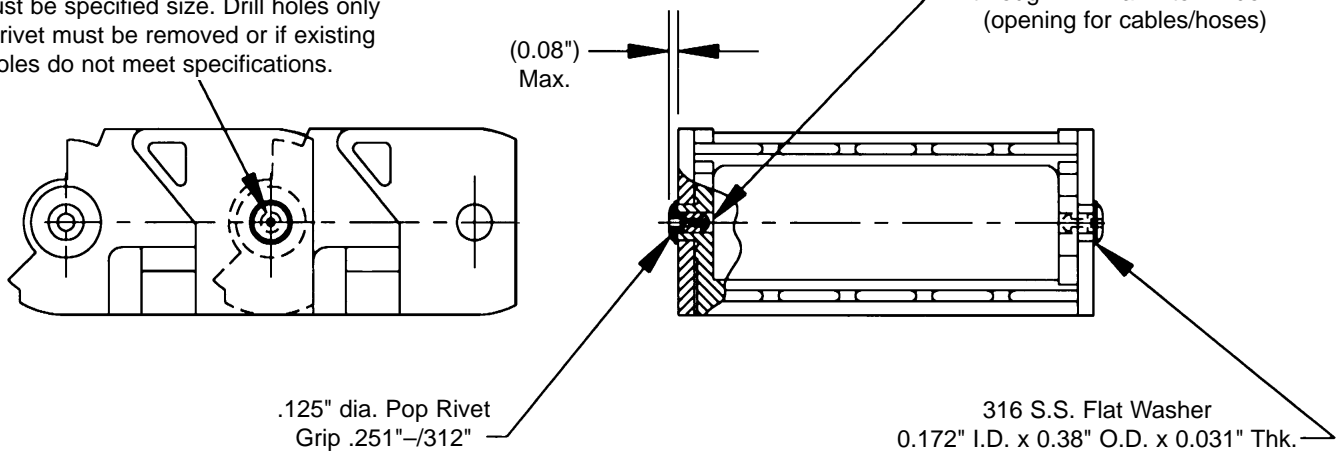
Ø.152 through links (#24 drill bit)

NOTE:

For pop rivet to work properly, hole diameter must be specified size. Drill holes only if old rivet must be removed or if existing holes do not meet specifications.

-NOTE-

Rivet should not protrude through link wall into window (opening for cables/hoses)



INSTALLATION

1. Drill out old rivets if required, being sure holes in links do not exceed 0.152" dia. On new links, check to make sure holes are 0.152; dia. Drill out if necessary using #24 drill bit.
2. Align holes in links as shown above.
3. Using blind rivet tool, insert rivets with flat washers into holes and seat rivets.
4. Check to make sure links pivot freely. Rivets must not protrude into cable/hose area nor extend more than 0.08" from outside surfaces of links. See drawing above. Install new rivets if necessary.



Gleason Reel Corp.

P.O. Box 26 • 600 South Clark St.
Mayville, Wisconsin 53050-0026
Phone 920-387-4120
FAX 920-387-4189